



## VDL RENA ELECTRONICA

# 90519007

**BITS2POWER® ETHERNET COMMUNICATION KEY**

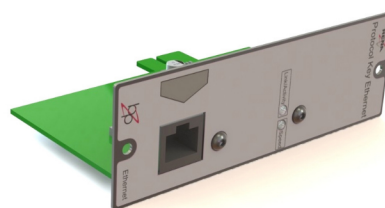
### Product description

- ETHERNET communication interface
- 10/100Mb
- Power and activity / Link LED
- 3 Year Warranty
- CE certified
- IP20

### Applied Standards

EN55022

EN55024



### Technical notes

Dimensions	115x80x38mm
Weight	170 gr.
Housing	Stainless Steel 430
Color	Blanc

### Ordering data

Type	Article number
ETHERNET key	90519007

### Electrical Characteristics

ETHERNET connection	10/100Mb base-T
LED	Activity / Link

### Protections

Current protection	Output current limited
Over voltage	Internally protected

### Connections

ETHERNET	RJ-45
----------	-------

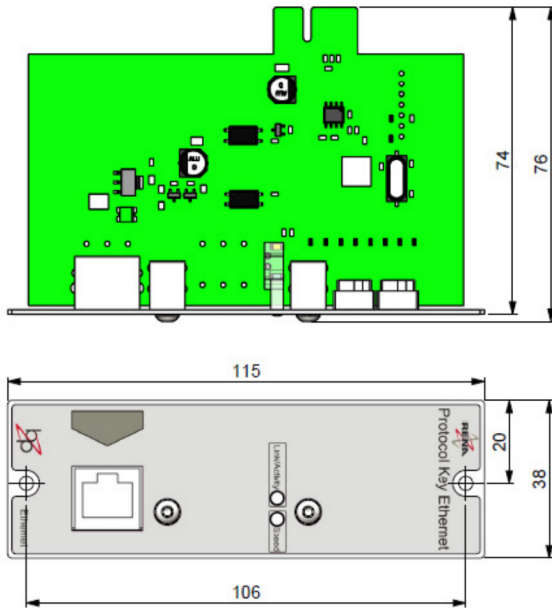
### Technical details

I/O	Speed	10/100 Mb
	Connection	full duplex
Protection	Line separation	IEEE802.3
	Withstand Voltage	I/P-O/P: 0,5kV
Safety & EMC	Isolation Resistance	I/P-FG: >100MΩ / 500VDC/ 25°C/ 70%RH
	EMI	EN55022 (CISPR22)
	EMS IMMUNITY	EN55024, EN61000-4-2, 3, 4, 5, 6, 11



### Mechanical Dimensions

Overall dimensions	L = 115 x W = 80 mm
	Height = 38 mm



### Environmental characteristics

Storage temperature	-20 – +85°C
Operating temperature	- 5 – +40°C
Operating humidity	10-95% RH
IP classification	IP20

### Installation and Safety Information

Installation must be carried out under observation of the relevant regulations and standards. The following advice must be followed:

- See PDC600 controller manual for system installation details.
  - The device contains components that are sensitive to electrostatic discharge and may only be installed in the factory and on site if appropriate EOS/ESD protection measures have been taken.
  - For outdoor or damp locations, be aware of the IP classification.
- All above specifications must be met in order to qualify for the 3 year warranty.

### Packaging

Box size (mm)	127x80x48 mm
Quantity each Box	1
Weight each box (kg)	0,1 kg

### Installation

Use screwdriver type PH1 for mounting screws.

### Electrical connections

ETHERNET	RJ-45	10/100Mb
----------	-------	----------